

# Introduction to NaviControlCentre

## Planning view

Turning arrow

Waypoint description

Geographic position

Distance between waypoints

Load saved route

Save planned route to PC

Upload route to NAVI2move

Download route from NAVI2move

Add new waypoint at the end of the list

Modify highlighted waypoint

Delete highlighted waypoint

Delete all waypoints

Turn	Title	Latitude	Longitude	Distance
1		50,15202	8,92257	0
2	mosel	50,15064	8,92472	0,21706
3	PFAD	50,15312	8,92577	0,28605
4	FUSSWEG	50,15339	8,92472	0,08065
5	4	50,15511	8,92139	0,30505
6	5	50,15525	8,92741	0,42965

List of waypoints

Total Distance: 1,31852 KM

## General

For planning a route, select the index card **Route plan**. Define waypoints by clicking into the map. You may add further information and a directional arrow to each waypoint. The additional information will be shown on the display later on. Especially the directional arrow helps you to understand, into which direction you exactly have to turn at the next waypoint.

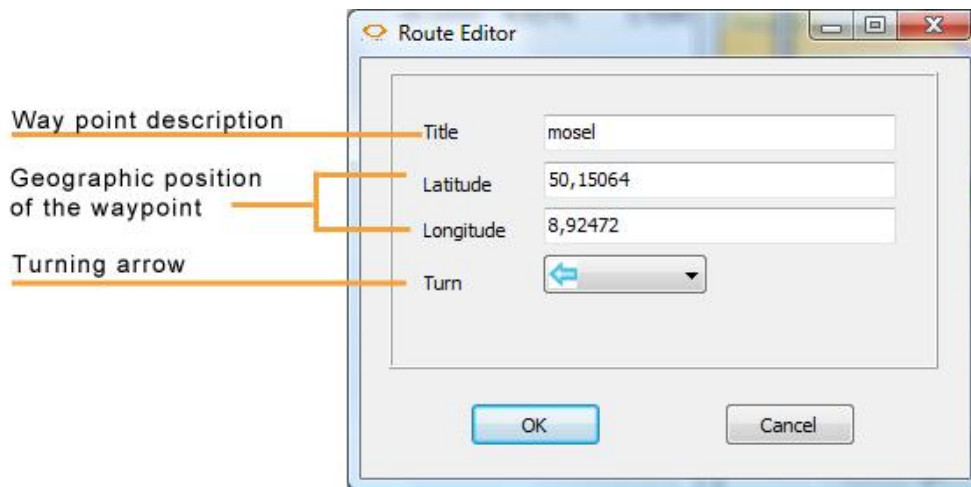
We recommend you to place waypoints only on road junctions where you have to leave your present route or where you need additional information to be displayed. Even though this kind of route planning may seem a little rough and sometimes is not following the exact road (e.g.: in serpentine), it will be more effective. Just place waypoints where you actually want to turn and do not waste time by adding to many, where you don't really need them.

**Important!** After planning a route, choose a high zoom factor and check if your waypoints are placed correctly. You might readjust the waypoints to assure their accuracy. If you have chosen a zoom factor which is too low, your planning might be not enough precise.



### Adding directional arrows and further information to a waypoint

After double-clicking a waypoint in your list of waypoints, the following window will pop up.



In this window you can entitle your waypoint and chose an additional, directional arrow. As long as you don't want to create a waypoint with own geographic data, there is no need to change latitude and longitude.

### Uploading a route to your NAVI2move

After finishing your route planning, you may upload it to your Navi2move by clicking the symbol for uploading.



The following state of charge window will pop up and display the data transfer to the Navi2move.



### Saving a route to your pc

After planning a route you may want to save it to a hard-disc, so you can use it again. For saving click the following symbol.

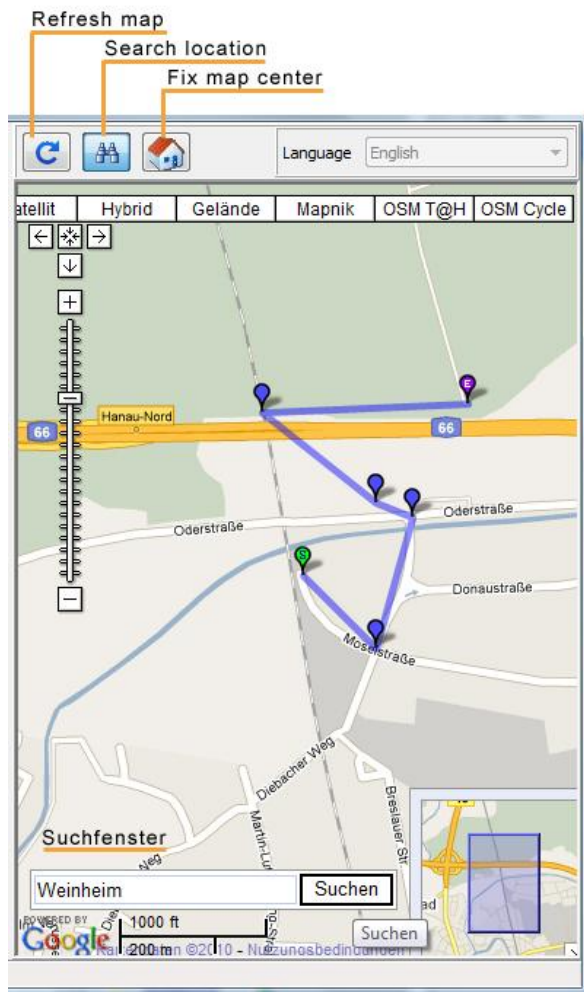


### Loading a saved tour

If you desire to upload a formerly saved tour to your Navi2move, you just click the following file symbol for opening saved tour files.



## Browsing the map and fixing a start view



In order to search a location, click the binocular symbol. In the lower left part of the map a search window will open. Here you can enter the location you are looking for.

If you want the NaviControlCentre to start at one specific position every time you open it, you have to browse a location before clicking the house symbol. With this action the current view will be saved as your start view.

## Track view:

The screenshot shows the NaviControlCenter interface. On the left, a sidebar contains icons for file operations: Load track (folder), Save track to PC (floppy), Export track into KML-file (KML), Export track into GPX-file (GPX), Export track into NMEA-file (NMEA), Download tracks from NAVI2move (download), Modify highlighted track (pencil), Delete highlighted track (X), and Delete all tracks (A). The main window is divided into a 'Track' list and a map. The 'Track' list has columns for 'Title' and 'Color'. A table below the list shows track statistics:

Start Time	2010/09/14 11:30:56	Total Time	0 Days 00:12:08
End Time	2010/09/14 11:43:04	Total Distance	835,393 M
		Total Points	77

The map on the right shows a street view with a yellow track highlighted. A label 'Displayed track' points to the track on the map. A status bar at the bottom indicates 'COM 7 Track Successful'. A caption below the screenshot reads: 'Track information: Start time, End time, Total Time, Distance and number of waypoints'.

## Download a tour from Navi2move to your computer

Connect your Navi2move to the computer. Chose index card **Tour** and click the downloading symbol.



The following pop-up window will show you the data transfer to your computer.



Your downloaded tour(s) will be displayed in the map window on the right. There are various options to save your tours (as KML, GPX, NMEA). By double-clicking a tour in the list you may change its colour.