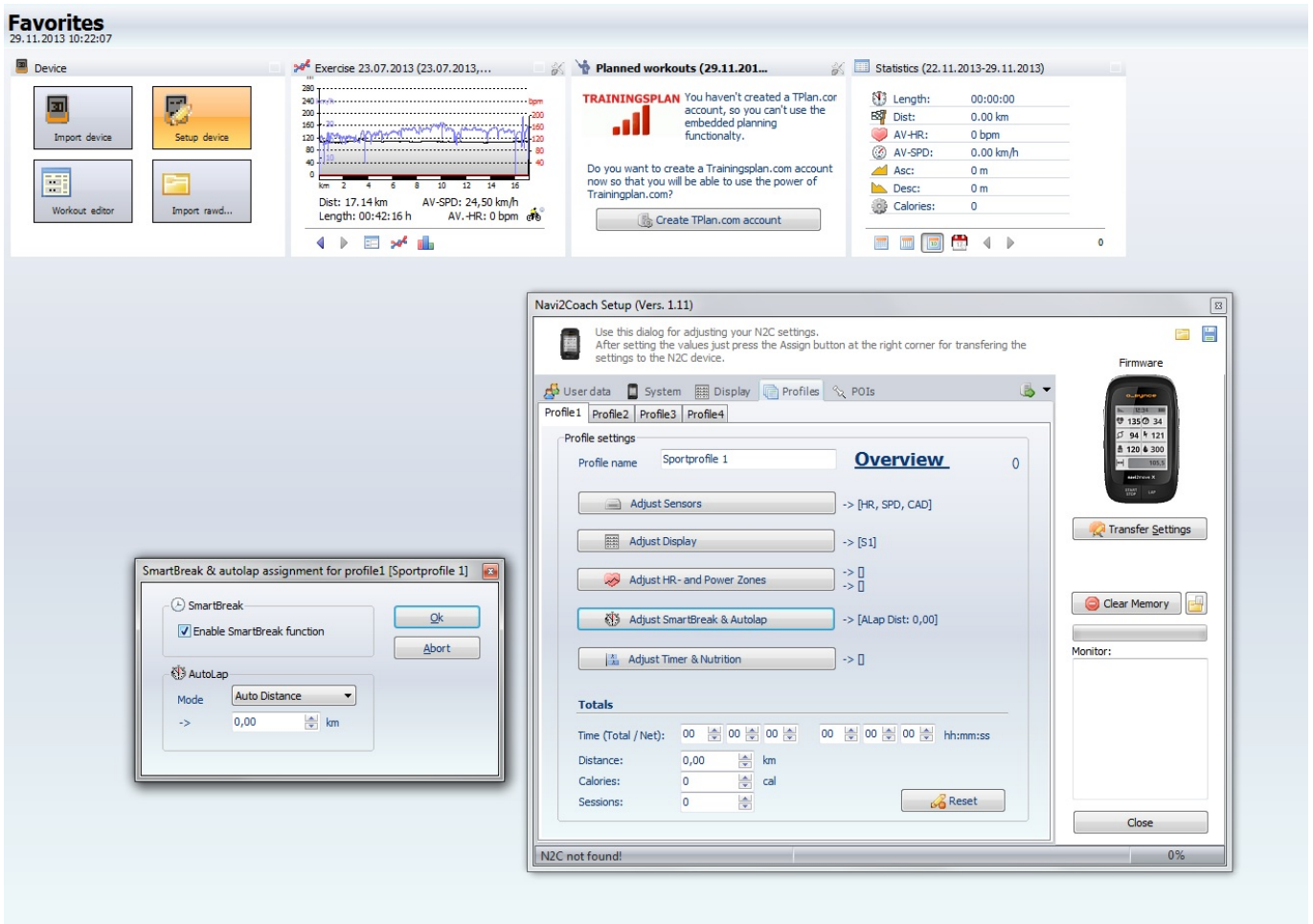


## Where do I setup the Pedal balance?

You can setup the Pedal Balance via the configuration menu at trainingLab



Or directly at the device:

Setup --> Display Pages --> eg Page 1 --> Edit --> Pedal PWR Bal

### Note:

- The function Pedal Balance is only available with the powermeter from Rotor, power2max and Garmin.
- If you use the Pedal balance in a splitted field on the left, then you will see only the percentage of the power for the left foot. If it's a splitted field on the right, you will only see the percentage of the power for the right foot. If you want to see both percentages on the left and right it is recommended not to split the field.

Unique solution ID: #1169

Author: o-synce support team

Last update: 2013-11-29 12:15